

# CC-B Series

High Efficiency Gas-Fired Water Boiler



**New Yorker**<sup>®</sup>  
RESIDENTIAL HEATING BOILERS

# WHY

## Why Hydronic Heat by New Yorker?



Since the 1940's, New Yorker has produced a variety of boilers for a wide range of applications with simple installation and service. As part of the New Yorker family of products, the CG-B gas-fired cast iron boiler delivers the proven features that have made New Yorker the choice of heating professionals nationwide.



### The Right Choice

When the time comes to replace your existing boiler, and you need a reliable and affordable heat source, ask your contractor about the New Yorker CG-B Series.

Replacing a heating system is a big decision and many factors must be evaluated. When you chose the New Yorker CG-B, all those decisions can be made easily making it the right choice.

### An Economical Choice

The CG-B's cast iron boiler design maximizes heat transfer for the most efficient use of fuel—saving your valuable heating dollars.

### A Reliable Choice

The New Yorker CG-B Series Boiler uses only name brand controls and accessories, giving you years of comfortable, reliable heating.

The CG-B Series' cast iron heat exchanger, with metal section connectors, is immune to petroleum based chemicals such as anti-freeze which can deteriorate rubber seals used by some competitors. This means a longer boiler life and peace of mind for you.

### A Wise Choice

- New Yorker stands behind the heat exchanger of the CG-B Series with a Lifetime Limited Warranty. See your installing contractor for more warranty information.
- The cast iron heat exchanger is designed for easy maintenance on yearly service calls, saving you money.
- The heat exchanger design and construction meet the requirements of the ASME Boiler and Pressure Vessel Code—this ensures quality and safety for you.
- The CG-B Series is available as a completely packaged boiler which saves time and money when installing.
- Adding a boiler powered indirect water heater provides abundant hot water for domestic use, hot tubs, spas, and whirlpools.

# Advantages of the CG-B

# ADVANTAGES

**Top Quality Components** are standard, including Taco circulator and Honeywell controls.



**Metal Section Connectors** resist chemicals to increase the life of your boiler.

**The Cast Iron Heat Exchanger** provides long life and dependability.

**Natural Gas or LP Gas** can be used, allowing you to match your heating needs.

**Deluxe Insulated Jacket** increases efficiency by reducing stand-by heat losses.

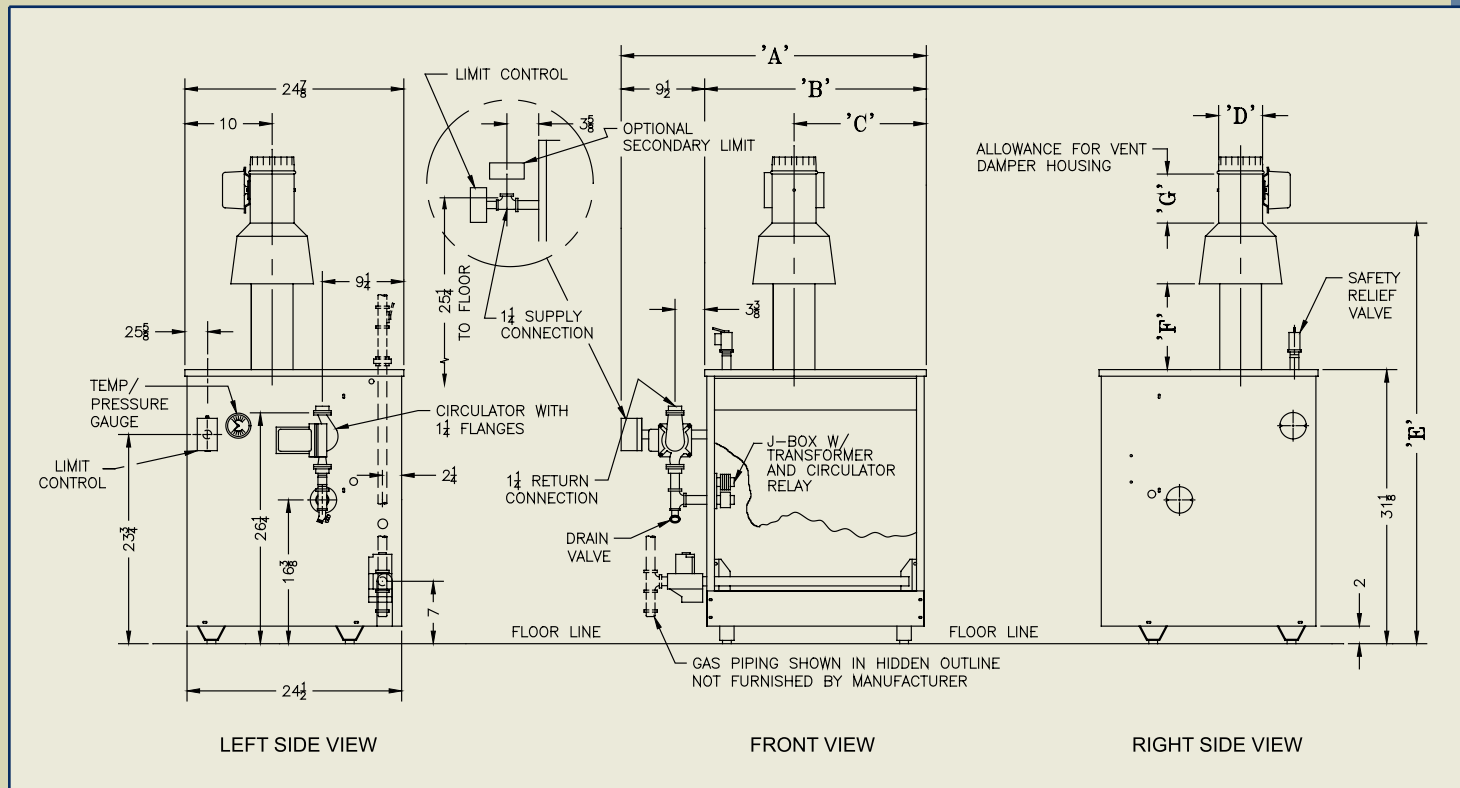
**Available in 6 Sizes,** with heating capacities from 52 to 191 MBH, so your specific household needs can be met.

**Intermittent Ignition System** available as an option for extra savings.

# Ratings & Specifications

Model	CG-30B	CG-40B	CG-50B	CG-60B	CG-70B	CG-80B
<b>DOE Heating Capacity MBH</b>	52	80	108	136	163	191
<b>Net IBR Water MBH</b>	45	70	94	118	142	166
<b>Input Gas MBH</b>	62	96	130	164	198	232
<b>AFUE % - Standing Pilot</b>	80.0	80.1	80.2	80.3	80.4	80.0
<b>AFUE % - Electronic Ignition</b>	82.6	82.3	82.0	81.7	81.4	81.2
<b>Chimney Requirements</b>	8" x 8" x 15'	8" x 8" x 15'	8" x 8" x 15'	8" x 8" x 15'	8" x 8" x 15'	8" x 12" x 15'
<b>Overall Width - 'A'</b>	21-1/2"	24-3/4"	28"	31-1/4"	34-1/2"	37-3/4"
<b>Jacket Width - 'B'</b>	12"	15-1/4"	18-1/2"	21-3/4"	25"	28-1/4"
<b>Jacket Side to CenterLine of Drafthood - 'C'</b>	6"	7-5/8"	9-1/4"	10-7/8"	12-1/2"	14-1/8"
<b>Drafthood Collar Dia. - 'D'</b>	4"	5"	6"	6"	7"	7"
<b>Floor to Top of Drafthood - 'E'</b>	45-3/4"	47-1/4"	48-5/8"	48-5/8"	50-1/8"	50-1/8"
<b>Drafthood Stem Height - 'F'</b>	8-1/2"	9-1/8"	9-3/4"	9-3/4"	10-3/8"	10-3/8"
<b>Vent Damper Height - 'G'</b>	4-1/2"	4-1/2"	4-1/2"	4-1/2"	5-1/4"	5-1/4"
<b>Approx. Shipping Weight (lbs.)</b>	254	298	346	408	450	506

\* All dimensions in inches



www.newyorkerboiler.com  
 P.O. Box 10  
 Hatfield, PA 19440  
 (215) 855-8055  
 PL81420101002 7/04 5Ms

